

FEATURES & ACCESSORIES



Strong Multi-Purpose Front Axle - The large diameter (30mm) front axle provides a rigid and strong mounting device for the front wheels, protects the front of the mower and can be used to lift the mower.

NEW for 2018



Oversized Handle Tubes* - Strong Steel tubes with welded brackets underneath keep cables hidden and protected. No more snagged cables. No more down time.

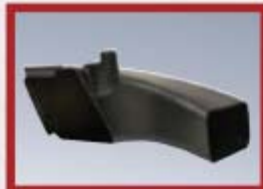
*This feature begins on serial # 09010501.



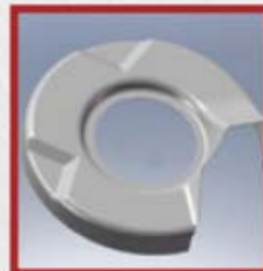
Blade Spindle Assembly - A forged spindle shaft for optimum strength. Die cast aluminum housing for better heat dissipation. Innovative lubrication design places each ball bearing in its own sealed compartment within the spindle housing ensuring permanent lubrication (available on 25" models).



Kawasaki Engines - Premium engine offerings commercial cutters desire, backed by a 3 year engine warranty



Discharge Chute - Remove the bag and use this convenient snap on discharge chute to tackle tall, thick grass. (sold separately) PN: 201238-1



Mulch Liner - This unique deflector keeps grass from sticking to the top of the deck. Grass is directed back down through the blades for superior mulching and clipping distribution. (Sold separately, available for 21" only) PN: 201241-1